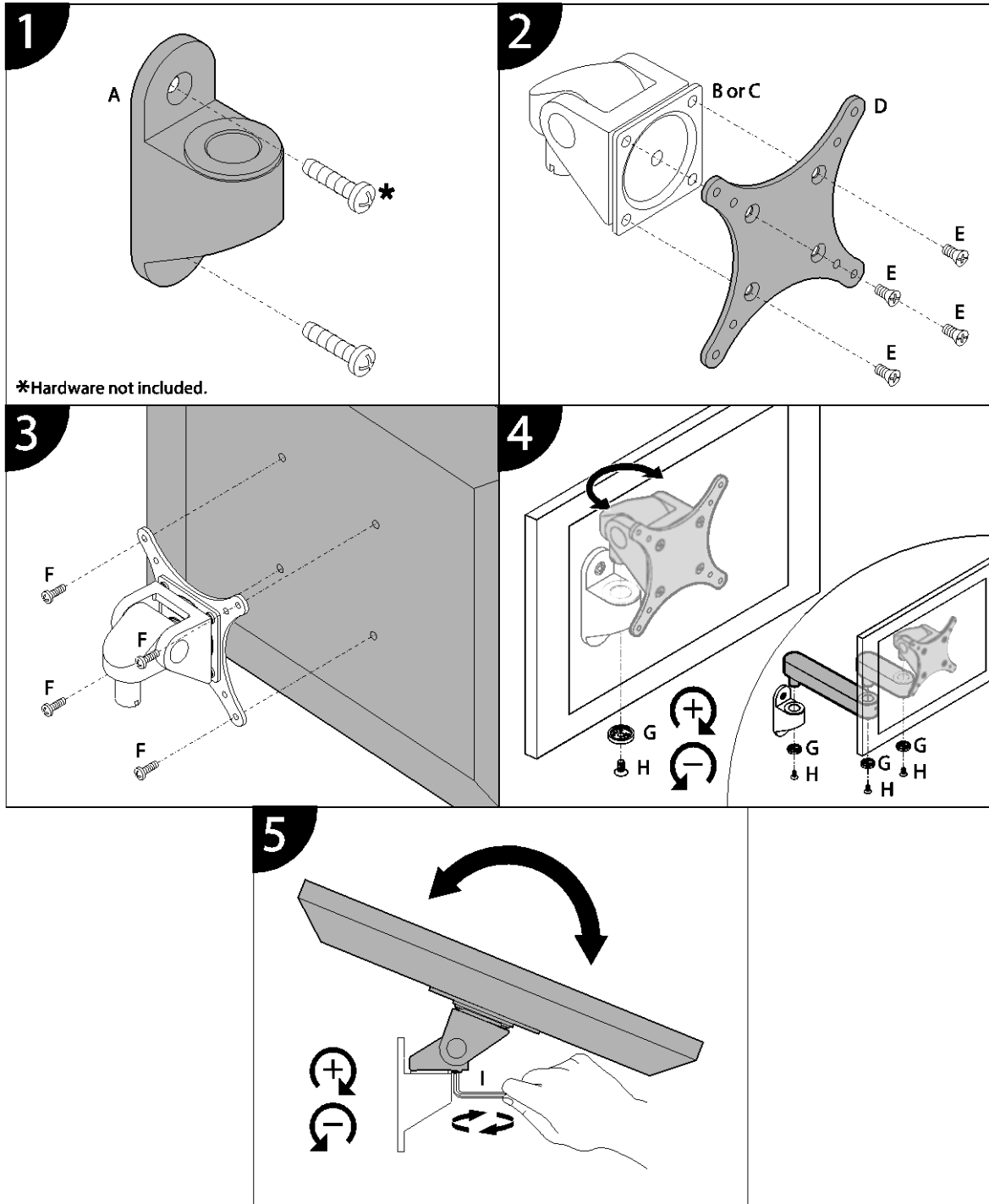

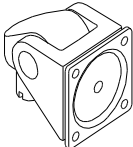
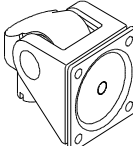


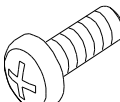
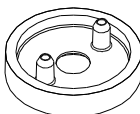

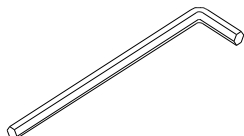


9110 LCD Wall Mount

Installation Instructions



Parts List

ITEM	DESCRIPTION / PART NO.	QUANTITY
		9110
A	 Wall Mount RP406795	1
B	 Monitor Tilter 405397	1
C	 Spring-Assisted Monitor Tilter (9110-HD only) 407747	1
D	 75mm/100mm VESA [®] Adapter Plate 105587	1
E	 10-32 x 3/8" Phillips Flat Head Screw 702281	1 (4-pack)
F	 M4-12 Phillips Pan Head Screw 702096	1 (4-pack)
G	 Dog Washer 105189	1
H	 10-32 x 3/8" FPhMS w/Lock Patch 705198	1
I	 7/32" Allen Wrench 701127	1