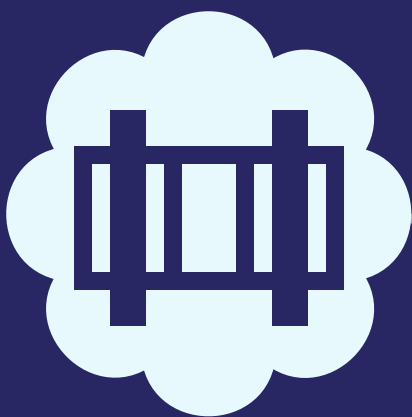


# 7 ESSENTIAL ACCESSORIES FOR NEW TV



## Wall Mounting Brackets

A wall mounting bracket is a device that attaches to the back of your TV and helps you secure it to a wall.



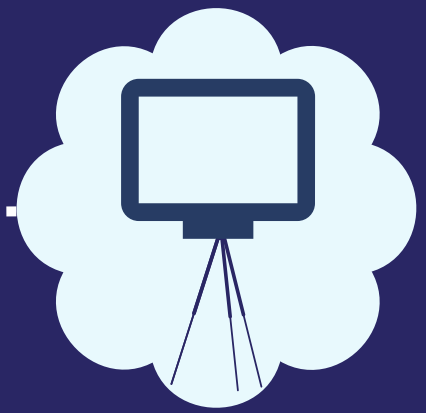
## HDMI Switcher

It allows you to connect multiple devices to your TV and switch between them with the push of a button.



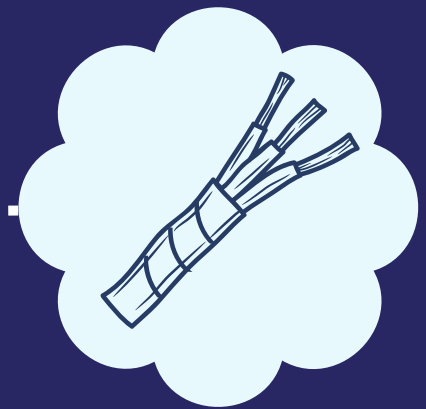
## Sound Systems

There are many different types of audio systems for TVs. One of the most common types of audio systems is the soundbar.



## Monet free-standing tripod TV stand

The Monet Tripod TV Stand is an easel style free standing, floor mounted tripod style bracket to mount a big screen TV.



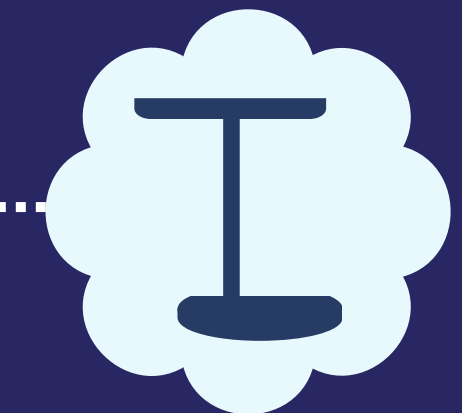
## Zip-Up Spiral Cable Tidy

Spiral Cable Tidy bundles multiple cables together, reducing clutter and improving safety.



## Wireless Headphones

TVs are usually a source of noise, but with wireless headphones, you can enjoy your favourite TV show without disturbing your family and neighbours.



## Narvi Headphone Stand

The Narvi aluminium headphone stand is a sleek and space-saving solution.